

veterinary technology for life

Eickemeyer®

www.eickemeyer.pl

Telefon 22 185 55 76

PhacoVet 2.0

Cutting-edge Technology for Phacoemulsification and Vitrectomy in Small Animals and Horses

Smart
Powerful
Mobile



EICKEMEYER® PHACOVET 2.0 – COMPONENTS

The new PhacoVet sets new standards in user-friendliness, performance, and mobility. Designed with a clear focus on simplicity, durability, and flexibility, this innovative device combines all essential components for fast installation, intuitive operation, and safe transportation.

It is suitable for both phacoemulsification and vitrectomy in small animals as well as horses. Developed and refined in close collaboration with leading experts in veterinary ophthalmic surgery, the system and its instruments have been extensively tested and optimised for reliable use in daily practice.

Thanks to its compact design, the PhacoVet can be easily operated in the clinic or conveniently taken directly to the patient. With dedicated service centers in Germany and Switzerland, customers benefit from professional and prompt support covering spare parts, delivery, repairs, maintenance, and technical assistance.

Standard components include:

- ▶ **PhacoVet 2.0 – Main device**
Compact and robust unit with touchscreen, rotary knob for screen angle adjustment, and all required ports for operation
- ▶ **Foot Pedal**
Linear-response pedal with built-in irrigation toggle button for hands-free control during surgery
- ▶ **Transportation Case**
Durable protective case for easy and safe transport

329003



QR code for
commissioning video
of the PhacoVet 2.0



EICKEMEYER® PHACOVET 2.0 – CHARACTERISTICS

The EICKEMEYER® PhacoVet 2.0 – the next-generation surgical system, designed to meet the unique demands of veterinary ophthalmology.

Key characteristics

- ▶ Specifically developed and optimized for veterinary ophthalmic surgery
- ▶ Versatile system for phacoemulsification and vitrectomy in both small animals and horses
- ▶ Created in collaboration with leading veterinary eye surgeons
- ▶ Single-use tubing system for maximum safety and efficiency
- ▶ Developed together with leading veterinary ophthalmic surgeons
- ▶ Flexible, and mobile – freedom to operate anywhere
- ▶ Individual and practical settings for daily use – save time and operate efficiently with default or pre-defined User Profiles and Operating Presets
- ▶ Quick setup and effortless transport
- ▶ Backed by fast, professional service in Germany and Switzerland
- ▶ Compatible with standard drain/aspiration bags as well as standard containers for extracted samples. Standard drain/aspiration bags can be purchased separately.

Technical Specifications

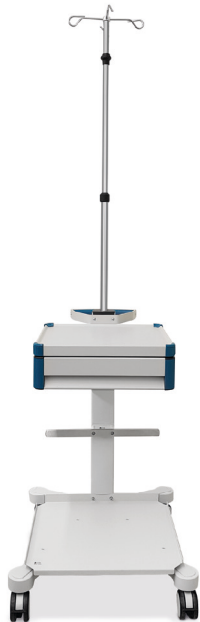
- ▶ Power Supply: 100–240 V, 110 VA, 50–60 Hz
- ▶ Device Weight: 3.1 kg (main unit), 7.0 kg (foot pedal)
- ▶ Temperature Range: 10–35 °C (50–95 °F)
- ▶ Humidity Range: 10–90 % relative humidity
- ▶ IP Rating: IP20, Protection Class II
- ▶ Control Interface: Touchscreen with adjustable angle
- ▶ Pedal Control: Precision foot pedal with full linear control and calibration options
- ▶ Software Modes: I/A, PHACO, VITRECT, PRE-OP, POST-OP
- ▶ Connectivity: Ports for Phaco and Vitrectomy handpieces, foot pedal, and irrigation/aspiration systems
- ▶ Compliance: Meets IEC 60601-1 standards; EU Directive 2024/2853 compliance

Accessories for EICKEMEYER® PhacoVet

Item No.	
329008	Tubing System for PhacoVet 2.0 <ul style="list-style-type: none">• Single-use• Pack of 10 pieces
329007	Equipment Trolley <ul style="list-style-type: none">• Optional Accessory



329008



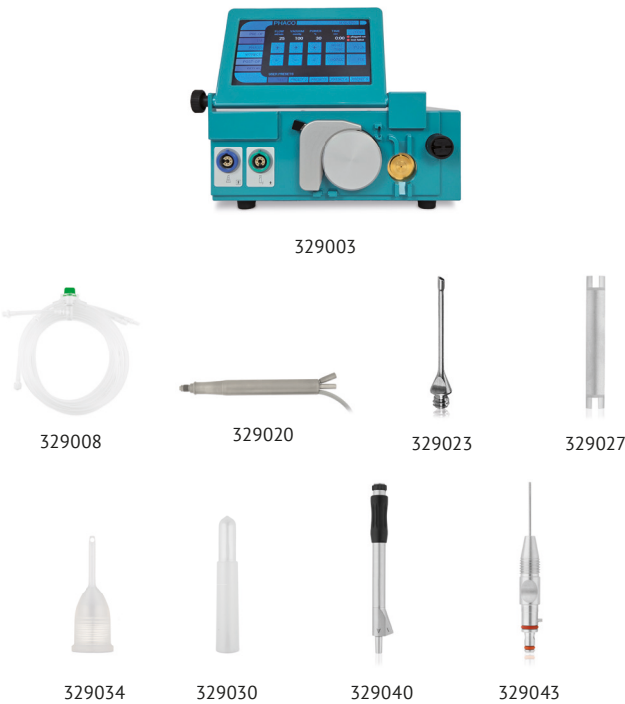
329007

EICKEMEYER® PHACOVET 2.0 – ITEM LIST

EICKEMEYER® PhacoVet 2.0 Small Animal Starter Set (Phaco)

Even in experienced hands, capsule rupture is a known potential complication during phacoemulsification. For maximum safety and preparedness, we recommend adding Vitrectomy Cutting Blades Unit (329011) and the Vitrectomy Handpiece (329012) for small animals to your starter set – enabling you to perform an emergency vitrectomy immediately if necessary.

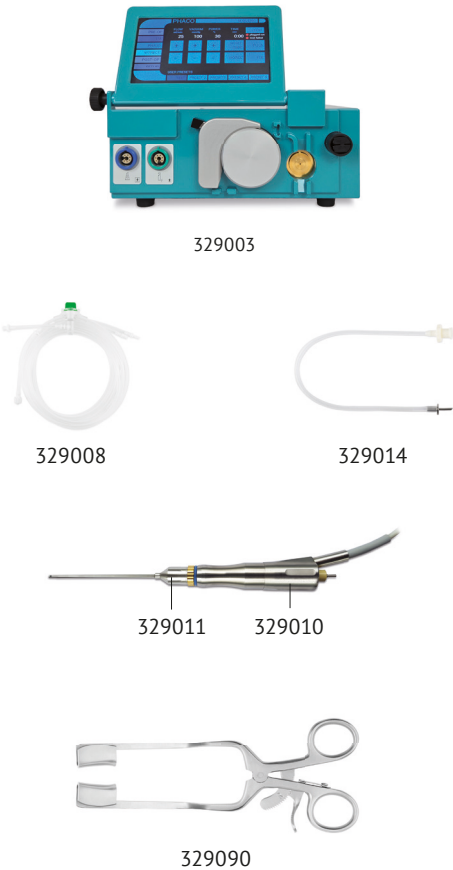
Item No.	
329102	Complete Set, consisting of:
329003	EICKEMEYER® PhacoVet 2.0 <ul style="list-style-type: none">• Incl. Foot Pedal and Transportation Case
329008	Tubing System for PhacoVet 2.0 <ul style="list-style-type: none">• Single-use• Pack of 10 pieces
329020	Phaco Handpiece, 28 kHz
329023	2x Phaco Needle, 20G, 30°
329027	Tip Wrench, metal, for straight Phaco Needle
329034	2x Silicone Sleeve for 20G Phaco Needle / I/A Tip 20G
329030	Test Chamber
329040	I/A Handpiece, monomanual (coaxial), reusable
329043	I/A Tip, straight, for silicone sleeve irrigation 20G (Ø 0.90 mm) <ul style="list-style-type: none">• Aspiration port, Ø 0.30 mm



EICKEMEYER® PhacoVet 2.0 Equine Starter Set (Vitrectomy)

Equine recurrent uveitis is a common eye infection in horses and one of the leading causes of blindness. It can be successfully treated surgically via Vitrectomy and can bring progressive eye damage to a halt.

Item No.	
329202	Complete Set, consisting of:
329003	EICKEMEYER® PhacoVet 2.0 <ul style="list-style-type: none">• Incl. Foot Pedal and Transportation Case
329008	Tubing System for PhacoVet 2.0 <ul style="list-style-type: none">• Single-use• Pack of 10 pieces
329010	Vitrectomy Handpiece for horses
329011	Vitrectomy Cutting Blades Unit for horses, 15G (Ø 1.80 mm)
329014	Vitrectomy Irrigation Trocar System for horses
329090	Eyelid Retractor for horses <ul style="list-style-type: none">• Stainless steel• Dimensions (in mm): L 155 x W 70



EICKEMEYER® PHACOVET 2.0 – ITEM LIST

Handpieces and Needles for EICKEMEYER® PhacoVet

For your safety and the best results, EICKEMEYER® reusable phaco needles are carefully verified for use with our 28 kHz handpieces. Use with third-party products is not supported and therefore excluded from warranty or liability

Item no.	
329020	Phaco Handpiece, 28 kHz
329021	Phaco Needle, 19G, 30° tip
329022	Phaco Needle, 19G, 30° tip, angled
329023	Phaco Needle, 20G, 30° tip
329024	Phaco Needle, 20G, 30° tip, angled
329025	Phaco Needle, 22G, 30° tip
329026	Phaco Needle, 22G, 30° tip, angled
329031	Phaco Needle, 18G, 30° tip, for horses • Compatible only with PhacoVet 2.0
329032	Tip Wrench, metal, for Phaco Needle for horses (329031)
329027	Tip Wrench, metal, for straight Phaco Needle
329028	Tip Wrench, plastic, for straight Phaco Needle
329029	Tip Wrench, plastic, for angled Phaco Needle
329030	Test Chamber



329020



329022



329031



329032



329027



329028



329030

Silicone Sleeves for EICKEMEYER® PhacoVet

- Reusable

Item no.	
329033	Silicone Sleeve for 19G Phaco Needle
329034	Silicone Sleeve for 20G Phaco Needle
329035	Silicone Sleeve for 22G Phaco Needle
329036	Silicone Sleeve for 18G Phaco Needle for horses (329031)



329034



329036

Vitrectomes and Trocar for EICKEMEYER® PhacoVet

- Reusable

Item no.	
329010	Vitrectomy Handpiece for horses • Does not include cutting blades
329011	Vitrectomy Cutting Blades Unit for horses, 15G (Ø 1.80 mm) • Does not include Vitrectomy Handpiece
329012	Vitrectomy Handpiece for small animals • Does not include Cutting Blades
329013	Vitrectomy Cutting Blades Unit for small animals, 20G (Ø 0.90 mm) • Does not include Vitrectomy Handpiece
329014	Vitrectomy Irrigation Trocar System for horses



329013

329012

EICKEMEYER® PHACOVET 2.0 – ITEM LIST

I/A Systems Monomaneal for EICKEMEYER® PhacoVet – Reusable

- Irrigation/Aspiration Handpiece
- Monomaneal (coaxial)
- Please note: Silicone sleeves for 329042, 329043, 329044 and 329045 must be ordered separately. For I/A Tips 329046 and 329047 with integrated metal sleeves, no silicon sleeves are needed.

Item no.	
329040	I/A Handpiece <ul style="list-style-type: none"> • Does not include I/A tips or silicone sleeves
329041	I/A Tip, straight, integrated metal sleeve 16G (Ø 1.60 mm) <ul style="list-style-type: none"> • Aspiration port Ø 0.35 mm • Dual irrigation side ports 0.98 mm
329042	I/A Tip, straight, for silicone sleeve 22G (Ø 0.70 mm) <ul style="list-style-type: none"> • Aspiration port Ø 0.30 mm
329043	I/A Tip, straight, for silicone sleeve 20G (Ø 0.90 mm) <ul style="list-style-type: none"> • Aspiration port Ø 0.30 mm
329044	I/A Tip, angled, 30°, for silicone sleeve 22G (Ø 0.70 mm) <ul style="list-style-type: none"> • Aspiration port Ø 0.30 mm
329045	I/A Tip, angled, 30°, for silicone sleeve 20G (Ø 0.90 mm) <ul style="list-style-type: none"> • Aspiration port Ø 0.30 mm
329046	I/A Tip, angled, 30°, integrated metal sleeve 16G (Ø 1.60 mm) <ul style="list-style-type: none"> • Aspiration port Ø 0.30 mm • Dual irrigation side ports Ø 0.98 mm
329047	I/A Tip, curved, integrated metal sleeve 16G (Ø 1.60 mm) <ul style="list-style-type: none"> • Aspiration port Ø 0.35 mm • Dual irrigation side ports Ø 0.98 mm
329048	O-Ring Set



329040



329042



329047

I/A Systems Monomaneal for EICKEMEYER® PhacoVet – Single-use

- Irrigation/Aspiration Handpiece
- Monomaneal (coaxial)
- Aspiration port Ø 0.35 mm
- Angled 45°

Item no.	
329080	I/A System 20G (Ø 0.90 mm) <ul style="list-style-type: none"> • Polished tip • Including silicone sleeve 16G (Ø 1.70 mm) • Irrigation dual side ports Ø 1.10 mm
329081	I/A System 20G (Ø 0.90 mm) <ul style="list-style-type: none"> • Rough tip • Including silicone sleeve 16G (Ø 1.70 mm) • Irrigation dual side ports Ø 1.10 mm
329082	I/A System 21G (Ø 0.80 mm) <ul style="list-style-type: none"> • Polished tip • Including silicone sleeve 17G (Ø 1.50 mm) • Irrigation dual side ports 1.65 x 0.77 mm
329083	I/A System 21G (Ø 0.80 mm) <ul style="list-style-type: none"> • Rough tip • Including silicone sleeve 17G (Ø 1.50 mm) • Irrigation dual side ports 1.65 x 0.77 mm
329084	I/A System 22G (Ø 0.70 mm) <ul style="list-style-type: none"> • Polished tip • Including silicone sleeve 18G (Ø 1.40 mm) • Irrigation dual side ports 1.50 x 0.67 mm
329085	I/A System 22G (Ø 0.70 mm) <ul style="list-style-type: none"> • Rough tip • Including silicone sleeve 18G (Ø 1.40 mm) • Irrigation dual side ports 1.50 x 0.67 mm



329080

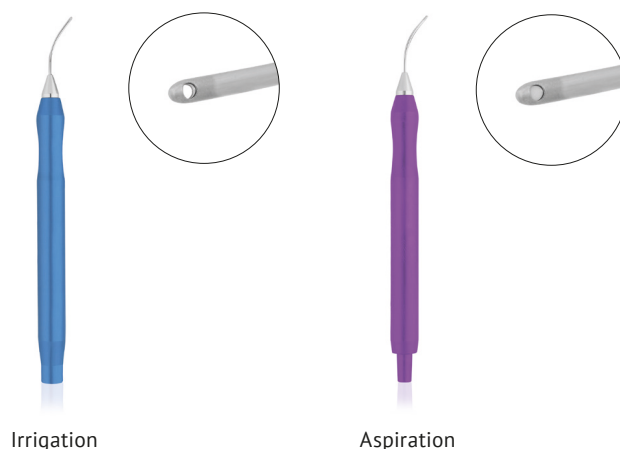


EICKEMEYER® PHACOVET 2.0 – ITEM LIST

I/A Systems Bimanual for EICKEMEYER® PhacoVet – Reusable

- Irrigation Handpiece (blue) / Aspiration Handpiece (violet)
- Curved cannula

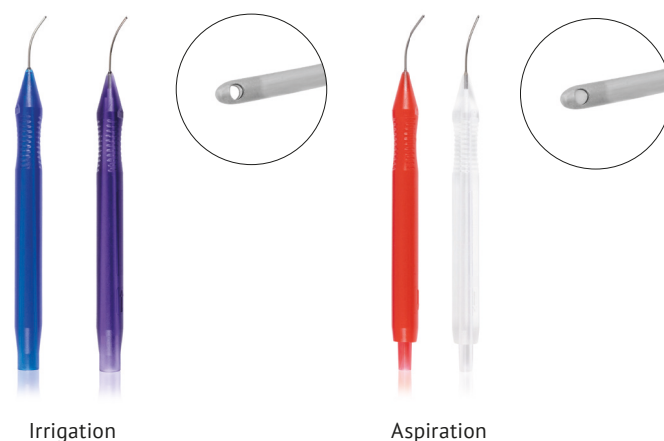
Item no.	
329050	Aspiration Handpiece 21G (Ø 0.80 mm) <ul style="list-style-type: none"> • Polished tip • Aspiration port Ø 0.30 mm
329051	Aspiration Handpiece 21G (Ø 0.80 mm) <ul style="list-style-type: none"> • Rough tip • Aspiration port Ø 0.30 mm
329052	Aspiration Handpiece 22G (Ø 0.70 mm) <ul style="list-style-type: none"> • Polished tip • Aspiration port Ø 0.35 mm
329053	Aspiration Handpiece 22G (Ø 0.70 mm) <ul style="list-style-type: none"> • Rough tip • Aspiration port Ø 0.35 mm
329054	Irrigation Handpiece 21G (Ø 0.80 mm) <ul style="list-style-type: none"> • Polished tip • Dual side ports Ø 0.50 mm
329055	Irrigation Handpiece 21G (Ø 0.80 mm) <ul style="list-style-type: none"> • Rough tip • Dual side ports Ø 0.50 mm
329056	Irrigation Handpiece 22G (Ø 0.70 mm) <ul style="list-style-type: none"> • Polished tip • Dual side ports Ø 0.45 mm
329057	Irrigation Handpiece 22G (Ø 0.70 mm) <ul style="list-style-type: none"> • Polished tip with open end 45°



I/A Systems Bimanual for EICKEMEYER® PhacoVet – Single-use

- Set of one Irrigation Handpiece (blue / purple) and one Aspiration Handpiece (red / transparent)
- Curved cannula

Item no.	
329070	I/A System 21G (Ø 0.80 mm) <ul style="list-style-type: none"> • Irrigation (blue): tip with open end 45° • Aspiration (red): port Ø 0.35 mm, rough tip
329071	I/A System 21G (Ø 0.80 mm) <ul style="list-style-type: none"> • Irrigation (blue): dual side ports Ø 0.45 mm • Aspiration (red): port Ø 0.35 mm, rough tip
329072	I/A System 21G (Ø 0.80 mm) <ul style="list-style-type: none"> • Irrigation (blue): dual side ports Ø 0.45 mm • Aspiration (red): port Ø 0.35 mm, polished tip
329073	I/A System 23G (Ø 0.65 mm) <ul style="list-style-type: none"> • Irrigation (purple): tip with open end 45° • Aspiration (transparent): port Ø 0.30 mm, rough tip
329074	I/A System 22G (Ø 0.70 mm) <ul style="list-style-type: none"> • Irrigation (purple): dual side ports Ø 0.45 mm • Aspiration (transparent): port Ø 0.35 mm, rough tip
329075	I/A System 22G (Ø 0.70 mm) <ul style="list-style-type: none"> • Irrigation (purple): dual side ports Ø 0.45 mm • Aspiration (transparent): port Ø 0.35 mm, polished tip



TIP VARIANTS



Irrigation, open end tip 45°



Irrigation, polished tip, dual-side ports



Irrigation, rough tip, dual-side ports



Aspiration, polished tip



Aspiration, rough tip

